

Welcome Visitors!

It is a delight and a pleasure to welcome you into our fellowship today. We fervently pray that the Spirit of the Lord will so envelope you during this service that your burdens will be lifted and your spirit will be so refreshed that you will say...

"It was good for me to be here!"

Whether you are looking for a church home, have questions about the plan of salvation, or just need a kind ear, we're here for you! Please feel free to come to the altar, speak to a minister, or call the Church during office hours.

Remember: You are always welcome at
God's House Church.

We trust that you will also attend our weekly services listed on the back of this bulletin.

*Bishop & First Lady Michael Shelby
and the entire GHC Family*

Week at a Glance

Sunday

Intercessory Prayer	9:00 a.m.
Children's Church Program	9:30 a.m.
Morning Worship	11:00 a.m.
Children's Church	11:00 a.m.

Monday

Tuesday

Bible Class	11:00 a.m.
-------------	------------

Wednesday

Outreach Ministry	6:00 p.m.
Prayer Meeting	6:30 p.m.
Bible Class	7:30 p.m.

Thursday

Sanctuary Choir Rehearsal	7:00 p.m.
---------------------------	-----------

Friday

Saturday

Jehovah's Chosen Rehearsal	6:00 p.m.
----------------------------	-----------

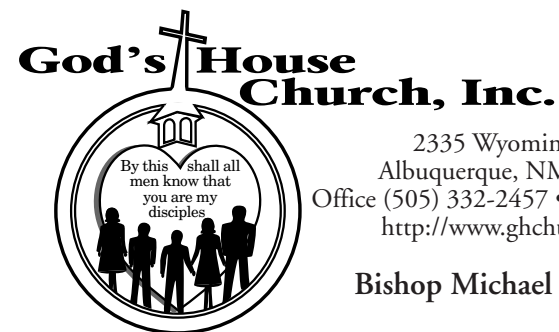
(See announcements for details on special events.)

Office Hours

10:00 a.m. - 2:00 p.m.
Tuesday - Friday

SOMETHING TO THINK ABOUT

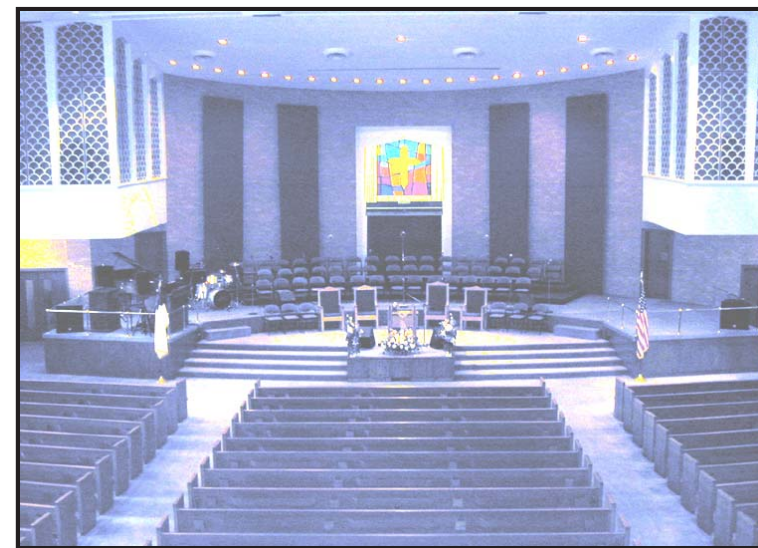
*Never be afraid to try something new.
Remember a lone amateur built the Ark.
A large group of professionals built the Titanic!!*



2335 Wyoming Blvd. NE
Albuquerque, NM 87112-1152
Office (505) 332-2457 • Fax (505) 299-7668
<http://www.ghchurch@flash.net>

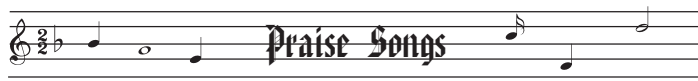
Bishop Michael Shelby, Pastor

June 1, 2003



Welcome!

If it had not been the Lord who on our side...
Psalms 124:1



More Than Anything

More than anything, more than anything
I love You, Jesus, more than anything
More than anything, more than anything
I love You, Jesus, more than anything

More than worldly wealth, more than life itself
I love You, Jesus, more than anything
More than worldly wealth, more than life itself
I love You, Jesus, more than anything

Welcome Into This Place

Welcome into this place,
Welcome into this broken vessel
He desires to abide in the praises of His people,
As we lift our hands and we lift our hearts,
As we offer up this praise unto His name.

Jesus On The Main Line

Jesus on the main line
Tell Him what you want.
Jesus on the main line
Tell Him what you want.
Jesus on the main line
Tell Him what you want.
Call Him up and tell Him what you want.

Great Is Your Mercy

Great is Your mercy toward me
Your loving kindness toward me
Your tender mercies I see day after day

Forever faithful toward me
Always providing for me
Great is Your mercy toward me
Great is Your grace

Jehovah We Praise You

Jehovah we praise You, Jehovah we praise You.
We praise Your Name, we praise Your Name.
Jehovah! Jehovah! We praise You!



Responsive Scripture Reading

Psalm 37:1-9,23

FRET not thyself because of evildoers, neither be thou envious against the workers of iniquity.
2 **For they shall soon be cut down like the grass, and wither as the green herb.**
3 Trust in the LORD, and do good; so shalt thou dwell in the land, and verily thou shalt be fed.
4 **Delight thyself also in the LORD; and he shall give thee the desires of thine heart.**
5 Commit thy way unto the LORD; trust also in him; and he shall bring it to pass.
6 **And he shall bring forth thy righteousness as the light, and thy judgment as the noonday.**
7 Rest in the LORD, and wait patiently for him: fret not thyself because of him who prospereth in his way, because of the man who bringeth wicked devices to pass.
8 **Cease from anger, and forsake wrath: fret not thyself in any wise to do evil.**
9 For evildoers shall be cut off: but those that wait upon the LORD, they shall inherit the earth.
23 **The steps of a good man are ordered by the LORD: and he delighteth in his way.**

Sermon Notes



Speaker _____
Subject _____
Bible Text _____

ANNOUNCEMENTS



The **Pastor's Aide Ministry** will have a **Cake Auction Today**, immediately after service in the Foyer.

The **Ushers' Ministry** will have a meeting immediately **after morning service in the Fellowship Hall**. All Ushers and those wishing to become Ushers are invited to attend.

The **Care Ministry** will have a meeting immediately **after service in the front of the Sanctuary**. All Care Ministers and those wishing to join is asked to be there.

The **Women's Ministry Annual Weekend** is fast approaching. The dates are **June 25th—29th** with services on **Wednesday, June 25th, and Thursday, June 26th**. These services are for both men and women. On **Saturday, June 28th**, there will be a **Women's Only Luncheon** at the **Marriott Courtyard at the Journal Center from 12 noon until 3 p.m.** The cost is **\$20 per person**. Tickets are available now. The guest speaker for this exciting weekend is Dr. Janice Crenshaw of Pensacola, Florida. Begin now inviting others to attend this powerful weekend!! *For further information or to get your tickets, see First Lady Charlotte Shelby.*

The **Outreach Ministry** will have a meeting on **Wednesday, June 4th, at 6 p.m.** in the Fellowship Hall. Anyone wishing to be a part of this Ministry are welcome to attend. *See Min. Brian Johns for more information.*

On **Saturday, June 7th, from 11 a.m. until 4 p.m.** the **Usherboard** will have a **Catfish Dinner in the Fellowship Hall for \$7 a plate**. Dine in, take out or delivery for party of 6 or more. *See Usherboard members for tickets now through June 1st.*

You are Cordially invited to present yourself as a witness to the joining of Bro. Lucius Gaskin and Sis. Kristi Mackey in the sacred bond of Marriage, on Saturday, June 14th., at 2 p.m. here in the Sanctuary. The Reception will follow in the Fellowship Hall at 4 p.m. R.S.V.P. is requested for accurate provision of refreshments. Please contact Sis. Kristi Mackey at 604-0535.

Attention All Chefs and Great Cooks: The **Nursery Ministry** is going to create a **GHC Cookbook**. It will consist of the following categories: Breads, Main dishes, Vegetables, Salads, and Desserts. Share your favorite creations by picking up a recipe card after service. Return the completed card to either Sis. Aisha Wilkins or Sis. Tammy Watson.

The **Scholarship Committee** will be awarding scholarships annually to members of **GHC** who are seeking higher education and have been accepted into a qualified program. *For more information on the application and selection processes, see Bro. Yomi Fadipe.* Please help our young people further their education by donating to the scholarship fund. Simply write **"Scholarship Fund"** on the space marked **"Other"** on your offering envelope with the designated amount of your donation. **Thank you for your support!**